

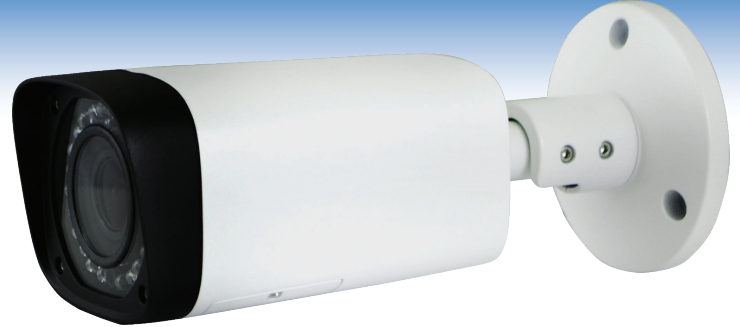
# IP3MIBC-212 / IP3MIBC-212-Z

3.0 Megapixel Infrared Bullet Network Camera



## Features

- 1/3" 3.0 MP SONY progressive CMOS
- H.264 video compression and MJPEG dual stream encoding
- Max 20fps @ 3MP, 30fps @ 1080p resolution
- Dual encoding streams supported
- Support ICR true Day/Night
- Built-in 2.7~12mm/F1.6 CS Auto Iris lens
- Max. IR distance: 98ft
- IP66 Water-proof protection
- DC12V, PoE



## Specifications

	IP3MIBC-212	IP3MIBC-212-Z
Image Sensor	1/3" 3 Megapixel CMOS	
Effective Pixels	2048 x 1536	
Frame Rate	3MP @ 20fps / 1080P @ 30fps	
Electronic Shutter	1/4~1/10000s	
Minimum Illumination	0.1 LUX @ F1.4 / 0 LUX @ F1.4 (IR On)	
Focal Length	2.7 ~ 12mm	
Focus Control	Manual	Auto
Angle of View	H: 92°~ 28°	H: 92°~ 28°
Lens Type	Manual / Fixed Iris	Motorized / Fixed Iris
Infrared Range	98ft. (Max.)	
Day / Night	Auto (ICR) / B&W / Color	
Noise Reduction	3D	
Compression	H.264, MJPEG	
Bit Rate	H.264H: 40K ~ 8192Kbps; MJPEG: 40K~16384Kbps	
Network	1 x RJ45 Ethernet Port (10/100Base-T)	
Protocol	IPv4/IPv6, HTTP, HTTPS, SSL, TCP/IP, UDP, UPnP, ICMP, IGMP, SNMP, RTSP, RTP, SMTP, NTP, DHCP, DNS, PPPOE, DDNS, FTP, IP Filter, QoS, Bonjour	
Compatibility	ONVIF, CGI, PSIA	
Max Users	20 Users	
Weatherproof Rating	IP66	
Power Supply / Consumption	DC12V/PoE (802.3af) / <4.5W	DC12V/PoE (802.3af) / <8.5W
Working Environment	-22°~140° F (-30°~ 60° C), Less than 95% RH	
Dimensions / Weight	2.8" x 3.1" x 8.4" (72mm×80mm×212.8mm) / 1.43 lb (.65 kg)	